

# Graduated Reintegration Putting Policy into Practice

Sandy Mullins, JD  
Devon Schrum

---

---

---

---

---

---

---

---

## Case Studies

### Washington

- Ranked 41<sup>st</sup> in rate of incarceration (U.S.)
- 16,755 incarcerated individuals
  - 12 prison facilities
- 679 work release residents
  - 13 facilities
- 18,106 individuals on supervision

### Illinois

- Ranked 29<sup>th</sup> in rate of incarceration (U.S.)
- 49,000 incarcerated individuals
  - 29 prison facilities
- 1,015 transition beds
  - 4 facilities
- Approximately 29,000 individuals on parole

---

---

---

---

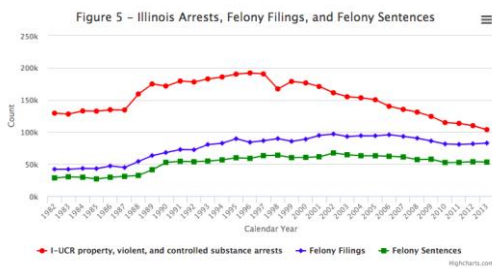
---

---

---

---

## Illinois Crime



---

---

---

---

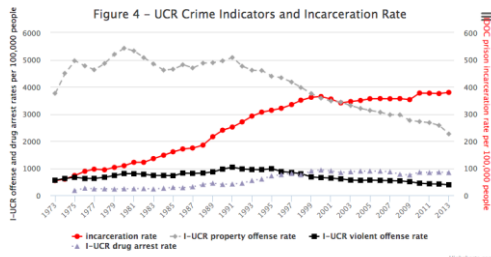
---

---

---

---

### Illinois Incarceration Rate




---

---

---

---

---

---

---

---

---

---

### Illinois Rauner takes aim at high prison population



Gov. Bruce Rauner issued an executive order Feb. 11, 2015, that aims to reduce the prison population in Illinois by 20 percent within 10 years. (Mike Getz, Chicago Tribune)

---

---

---

---

---

---

---

---

---

---

### Graduated Reintegration




---

---

---

---

---

---

---

---

---

---

### Graduated Reintegration: The Model

- Release inmates early into a tightly supervised community setting with appropriate conditions;
- Provide appropriate services and employment/education/training opportunities to assist successful reintegration; and
- Gradually relax supervision requirements (step-down) as a reward for compliance and achievement.

---

---

---

---

---

---

---

---

### Graduated Reintegration: The Elements

- In-reach in prison to prepare and motivate and plan WITH the eligible inmates
- Release prior to Mandatory Statutory Release date
- Housing provided (scattered site)
- Encouragement and assistance in finding employment, getting vocational training or education without the usual "mad dash".
- Treatment and additional services provided as needed
- Subsistence allowance with financial literacy training

---

---

---

---

---

---

---

---

### GR Elements continued

- Tight and closely monitored initial release conditions (restrictions on movement, visitors, substance use, use of cash, etc.)
- Swift and certain rewards (relaxed restrictions other perks) for compliance and sanctions (tightened restrictions) for non-compliance
- No return to prison except for new crimes or absconding

---

---

---

---

---

---

---

---

### Baby Steps

- Hired a Case Manager
- Developed pre-release program
- First cohort of 15 participants currently in pre-release program.
- Mechanics developed for housing and support for first three GR participants.
- Providing assistance in drafting model policies
- "Deliberative Corrections" in action
- Inspired expansion of graduated reintegration.

---

---

---

---

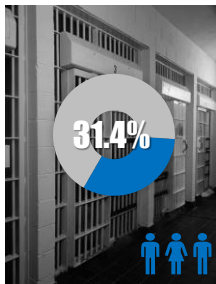
---

---

---

---

### Washington State



Our goal is to reduce the number of individuals who return to institutions.

Lower return rates reflect increased public safety.

For releases in calendar year 2013, 31.4% of individuals released were readmitted to a Washington State prison within three years.

---

---

---

---

---

---

---

---

### Reentry in Washington State

- Deep History
- Grant Monies
- Collaborative Relationships
- Some Infrastructure
- Legislative Action

And then...

**RECESSION**

---

---

---

---

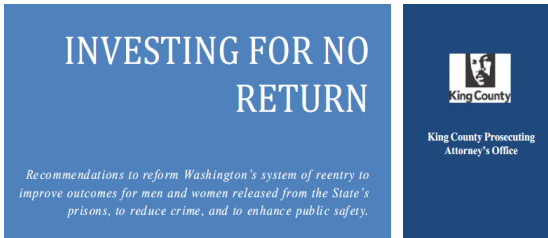
---

---

---

---

### A 2012 Convening




---

---

---

---

---

---

---

---

### 2013 Second Chance Act Reentry Grant

The Second Chance Act (SCA) supports state, local, and tribal governments and **nonprofit organizations** in their work to reduce recidivism and improve outcomes for people returning from state and federal prisons, local jails, and juvenile facilities.

- (2013) \$750,000 grant funding with \$750,000 state match
  - 1 Year Planning Phase
  - 2 Year Demonstration Phase
  - Serving 75 men releasing to King County, WA from prison

---

---

---

---

---

---

---

---

### Planning Phase

- Identified key community members working in Reentry
  - Faith Based
  - Employers
  - Education Partners
- Identified key goals and performance outcomes
  - Reduce recidivism
  - In-reach and after care
  - Networked pathways to success

---

---

---

---

---

---

---

---

### Planning Phase Continued

- Met in the community
- Invited additional stakeholders
- Grew network of reentry providers to include:
  - peer mentoring
  - housing providers
  - Behavioral Health providers
- Discussed and developed the need for new DOC employee type
- Started groundwork for DOC infrastructure to support program

---

---

---

---

---

---

---

---

### Transition Specialists

- DOC employees whose responsibilities include:
- Identifying participants eligible for grant
  - Weekly meetings (orientations) inside prison
  - Work with participants to assess individual reentry needs
  - Co-developing reentry case plan with participants
  - Connecting participants with appropriate direct service providers

Your Net Worth is...

no greater than your **NETWORK!**

Franklyn Smith, Transition Specialist

---

---

---

---

---

---

---

---

### Reentry – Creating a New Standard



- Evidence Based Programming
- Supportive Transition across Continuum
- Assistance with Services/Benefit Enrollment
- Community In-Reach and After-Care
- Employment, Education, and Treatment Options
- Individualized Case/Release Plan
- WA State Identocard
- Vital Documents Portfolio
- County and State Lifeline Information

---

---

---

---

---

---

---

---

### Making it Work

- Dedicated staff
- Authority
- Resources
- Infrastructure
- Communication
- Ownership at all levels
- Communication plan
- Adapt

---

---

---

---

---

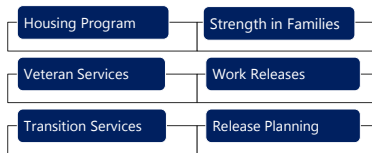
---

---

---

### Reentry Division

#### Building Infrastructure



---

---

---

---

---

---

---

---

### Master Forces will Drive Adjustments

- System culture
- Managing risks associated with early release
- Changes in state statute.

---

---

---

---

---

---

---

---

Quinn: Secret prison early release 'big mistake'



---

---

---

---

---

---

---

---

From the Headlines... 2010, 2015, and 2017

Three Top Illinois DOC Officials Sacked; Director Resigns

Illinois prisons director resigns 2 months after taking job

**Illinois Is Still Facing the Nation's Worst Budget Crisis**

---

---

---

---

---

---

---

---

Change is Relative

- Lack of community resources.
- Lack of system resources
- System culture
- Political barriers

---

---

---

---

---

---

---

---



### Strive For Impact Not Just Outcomes

- Grow capacity
- Develop promising practices
- Build partnerships
- Expand use of the model

---

---

---

---

---

---

---

### Supporting Successful Transition

- Begins Inside – identifying barriers
- Build Care Teams
- Professional services start inside and transition to community
- Risk/Needs Assessment to prepare discharge packet
- Direct connection “warm handoff”
- Provide short term funding assistance to match individual need
- Direct Connection to Community- and Faith-Based Peer to Peer and Support Groups and Workshops
- Provide Essential Needs Tool Box to assist in the initial transition phase

---

---

---

---

---

---

---

### Check Assumptions Throughout Process

- Virtual Cell vs Reality
- People don't always want what you are giving

---

---

---

---

---

---

---

### Make it Stick

- Plan for sustainability
- Collect and analyze data
- Collect and share stories
- Evolve the organizational structure
- Integrate into IT
- Build a bigger base of support and involvement

---

---

---

---

---

---

---

---

Executive Order 16-05

### Building Safe and Strong Communities Through Successful Reentry



“One of the most significant public safety investments we can make to improve the lives of individuals and the safety of our communities is to do more to prepare people leaving our criminal justice system for a successful re-entry to society.”

*Governor Inslee, Washington State*

---

---

---

---

---

---

---

---

### Washington Statewide Reentry Council

15 Member Governor Appointed Council Representing:

- Reentry Success Experienced
- Prosecutors
- Public Defense
- Education
- Adult and Juvenile Corrections
- Tribal Relations
- Law Enforcement
- Community Leaders
- Housing
- Faith Community

---

---

---

---

---

---

---

---

### Washington Graduated Reentry Proposal

Structured transition leveraging partial confinement as a release option

Up to the last 12 months of sentence in a Work/Training/Education Facility

- Must be minimum custody
- Excludes certain crime types

Up to the last 6 months of sentence in a home setting using electronic home monitoring

- Will require Community Supervision
- Must be approved release address
- May include subsidized housing assistance

---

---

---

---

---

---

---

---

Thank You!

---

---

---

---

---

---

---

---