



JustLeadershipUSA (JLUSA) is dedicated to cutting the US prison population in half by 2030 while reducing crime. JLUSA empowers people most affected by incarceration to drive criminal justice policy reform.

The United States makes up **5% of the world's population**. Yet, **1 in 4** people incarcerated worldwide are in the land of the free.



JLUSA

Lifetime Chance of Imprisonment



JLUSA

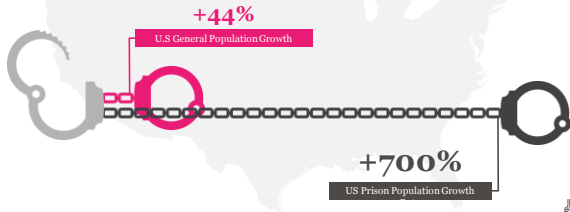
Nearly Half of All People in State Prisons are Incarcerated for Non-Violent Offenses



Courtesy of www.aclu.org

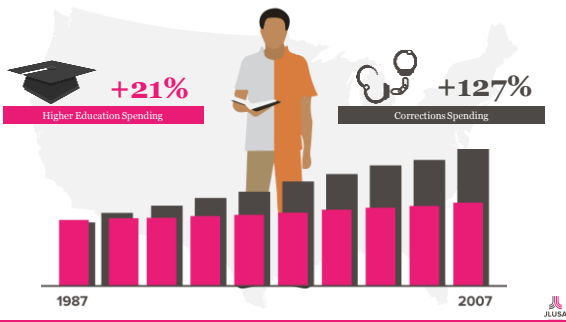


From 1970 to 2005, the US prison population rose by 700%, a rate far outpacing that of the general population and crime rates.



Courtesy of www.aclu.org





Courtesy of www.aclu.org