

Using Recidivism Data to Improve Correctional Practice

September, 2012

Presenters:

Laurie Lindahl

Leah Bower

Kimberly Sperber

Presentation Objectives:

- To provide a brief description of Ramsey County Community Corrections and its internal evaluation philosophy
- To share current recidivism data and how it has been used to improve practice
- To have an open discussion about what other jurisdictions are doing with recidivism data

RAMSEY COUNTY COMMUNITY CORRECTIONS



- Minnesota State Population:
5,303,925
- Ramsey County Population: 508,640
- Ramsey County is the smallest and most densely populated county in Minnesota.
- Ramsey County Community Corrections (RCCC) supervises approximately 9% of the juveniles on probation statewide and 12% of adult offenders on probation statewide.

Internal Evaluation Philosophy

- RCCC has dedicated resources to sustain and grow its internal Research and Evaluation Unit
- Commitment to integrating evaluation into the culture of the organization
 - Decision makers need to know that they can trust the information
 - Focus on improving the performance of programs/interventions

Internal Evaluation Philosophy (con't)

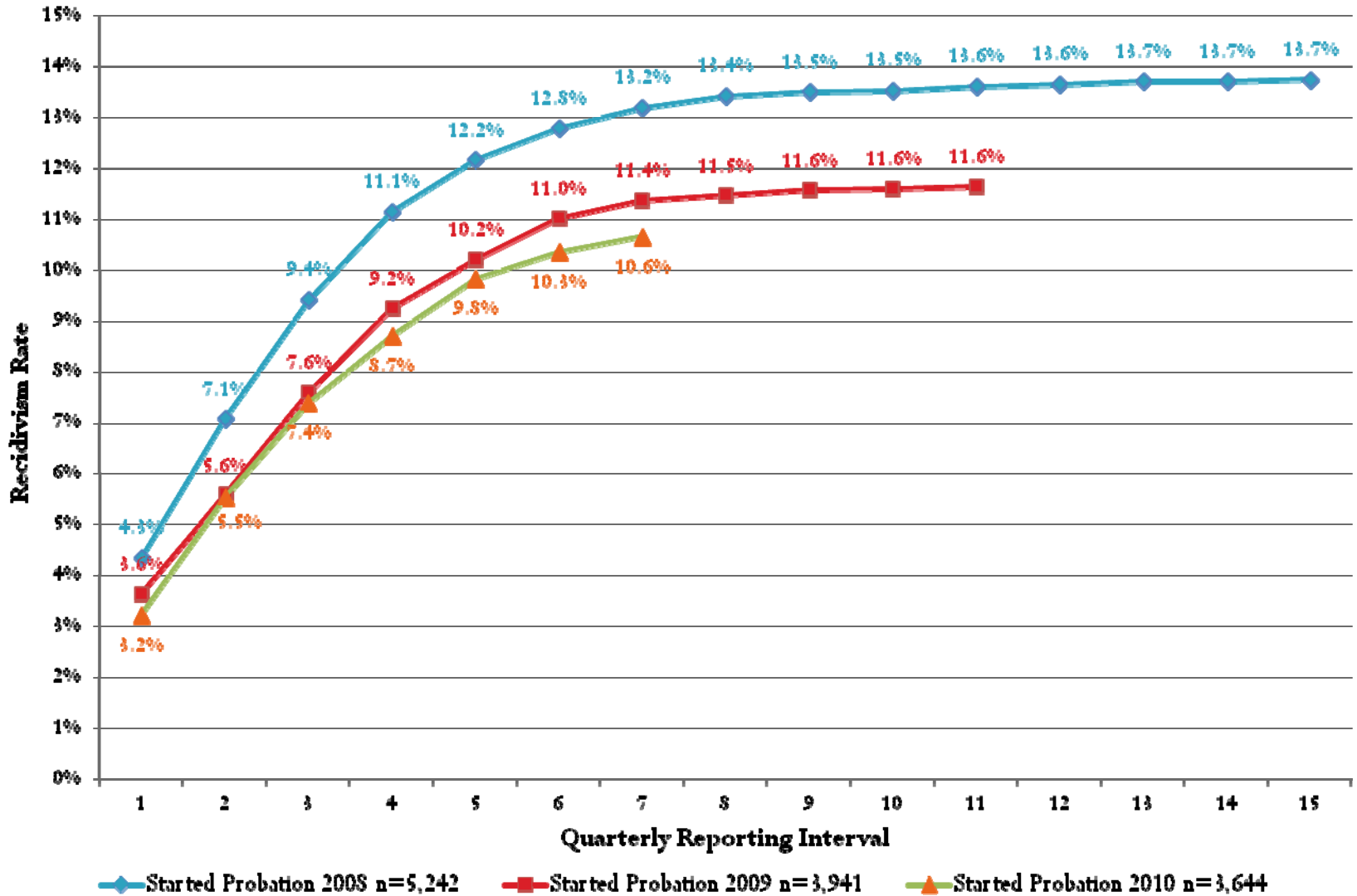
- Emphasize evaluation as an iterative and reflective process that has to be embedded in the decision making structure of the department.

Recidivism – Developing an Automated System

- Moving from hand counts to automation
 - The creation of ARTS (Automated Recidivism Tracking System)
- Defining recidivism
 - Comparability
 - Our definition
- Preliminary data analysis
 - Face validity
 - Measurement stability

Ramsey County Community Corrections - Adult Services Division

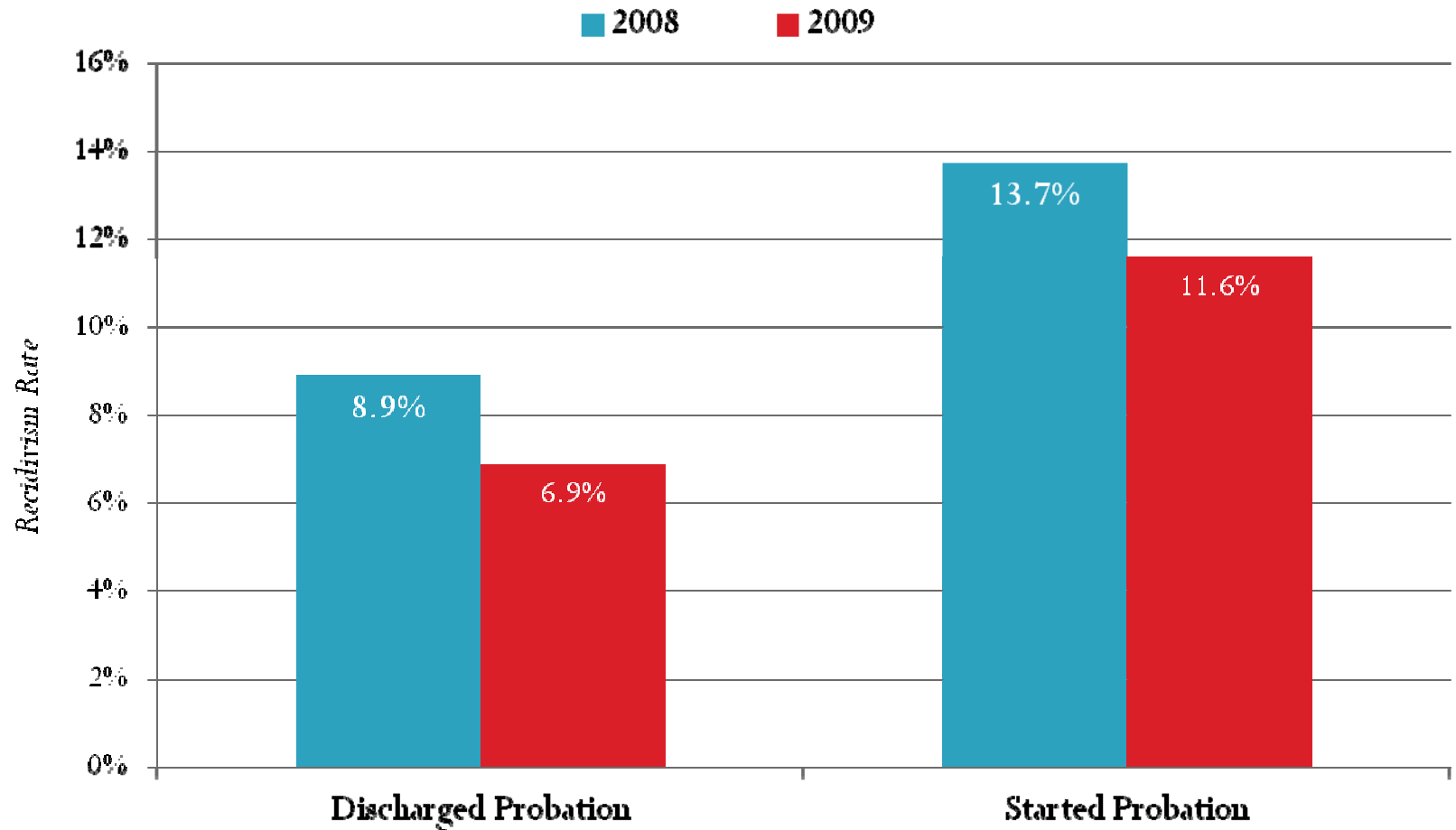
Study #1a: 12-Month Recidivism Comparison: Clients that Started on Probation



Using Recidivism Data to Improve Practice

- Targeting your audience
 - Internal – director, senior managers, supervisors, staff. What do they want to know?
- Measurement for whom?
 - Focusing on offenders while they are on probation versus after discharge from probation

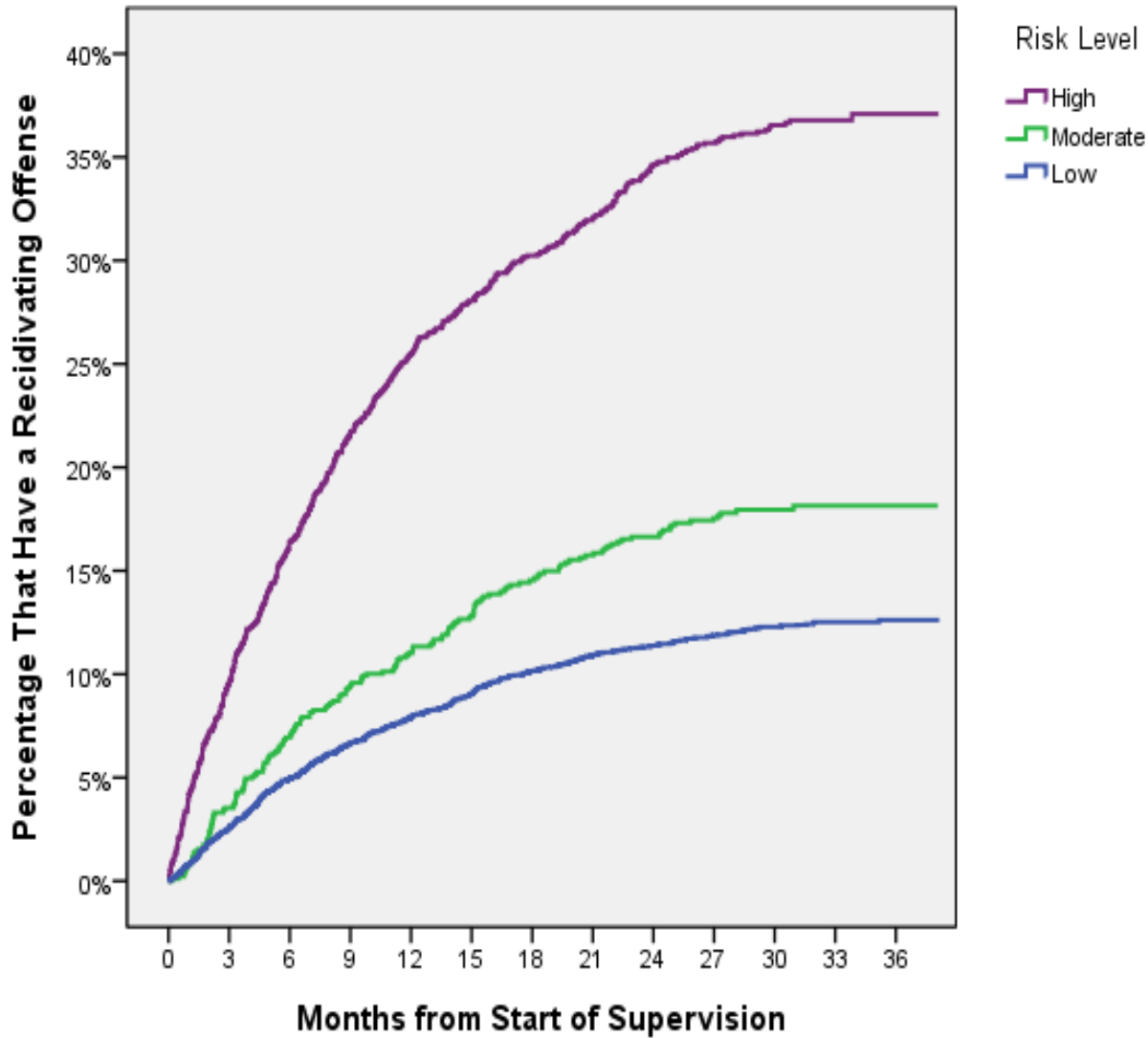
12-Month Recidivism Comparison Discharged Probation vs. Started Probation



Sample Recidivism Studies/Analyses

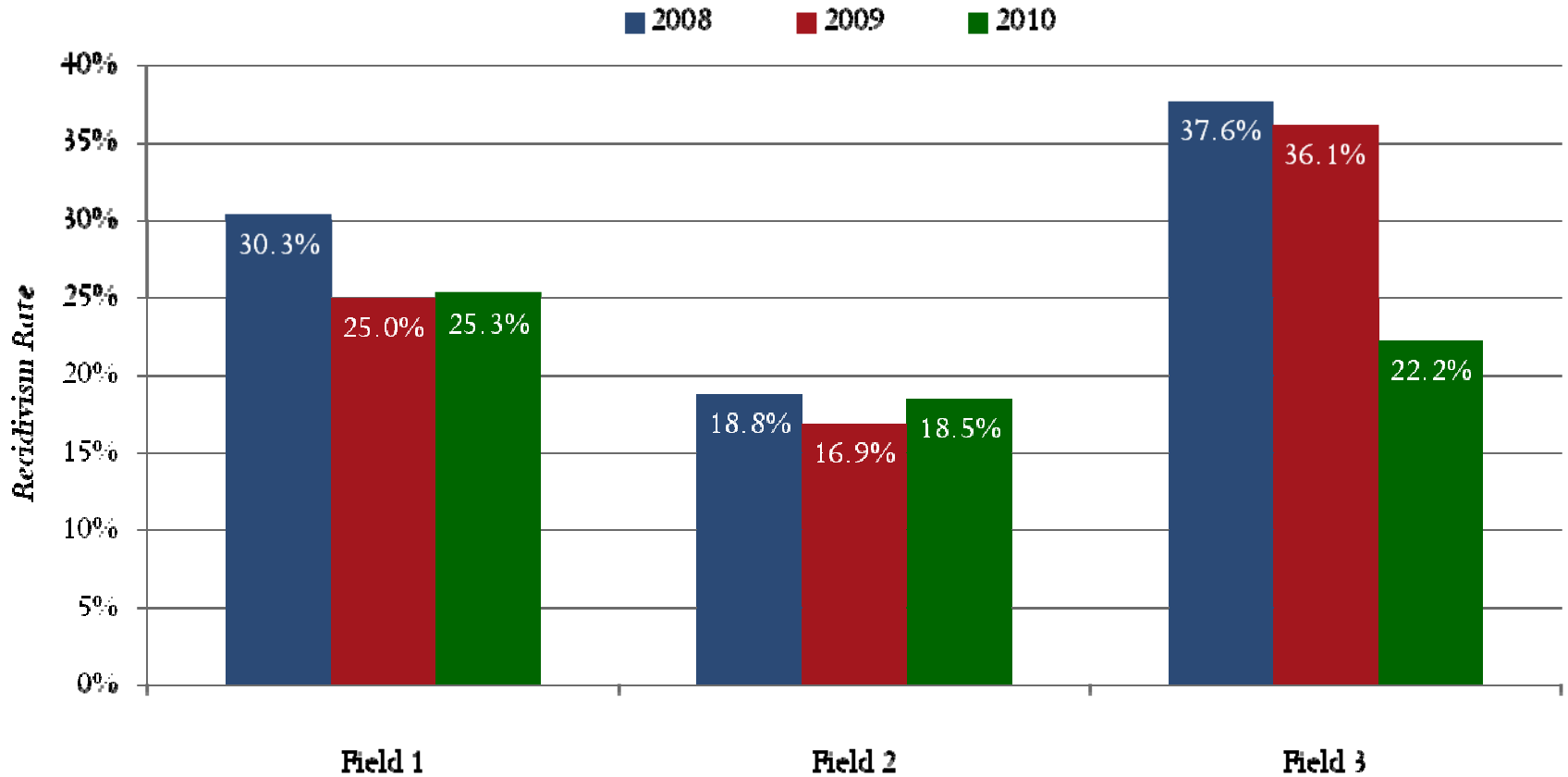
- Recidivism by risk level
- Linking recidivism to the implementation of EBP

Recidivism by Risk Level

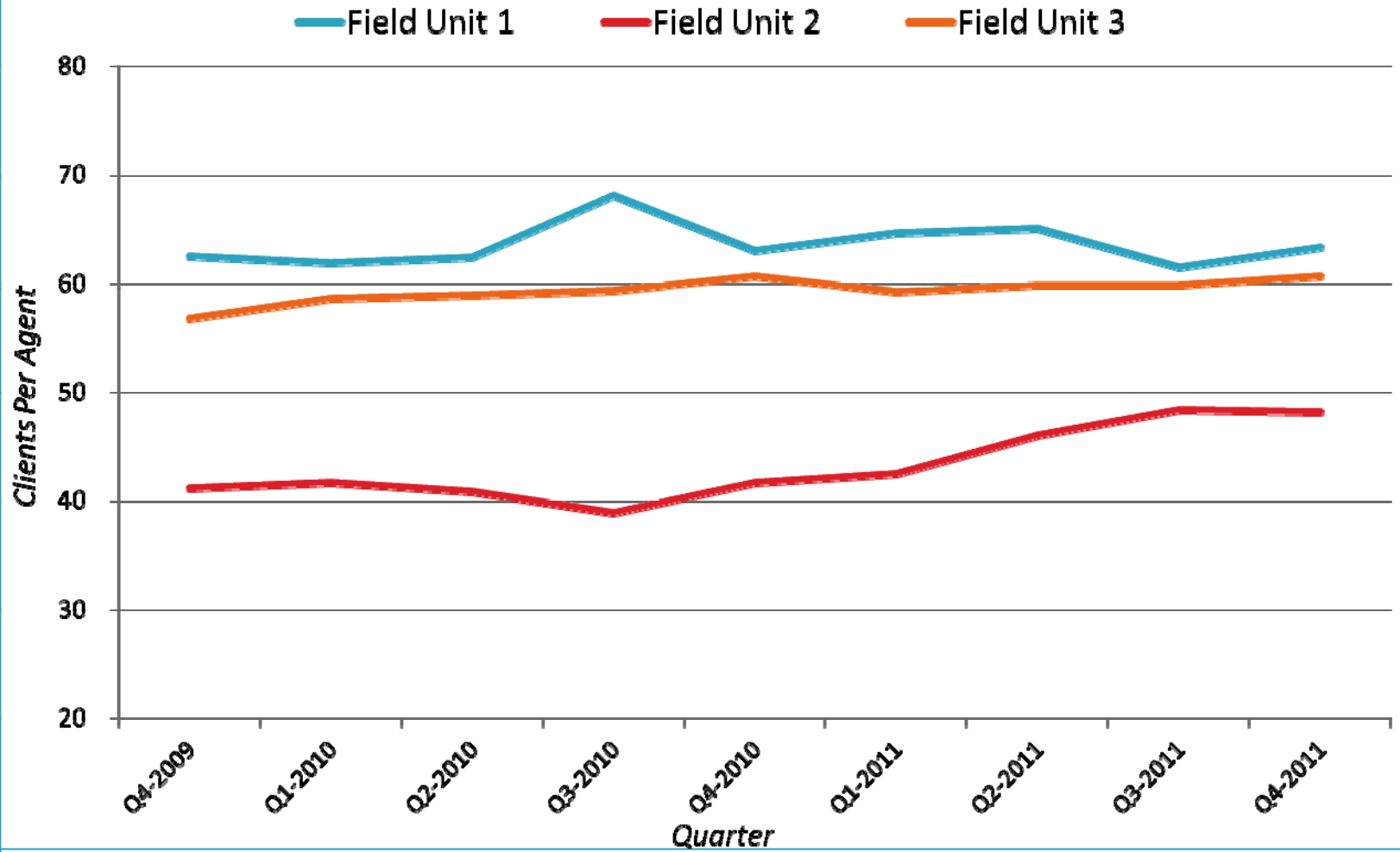


Ramsey County Community Corrections – Adult Services Division 12- Month Recidivism Comparison by Supervising Units

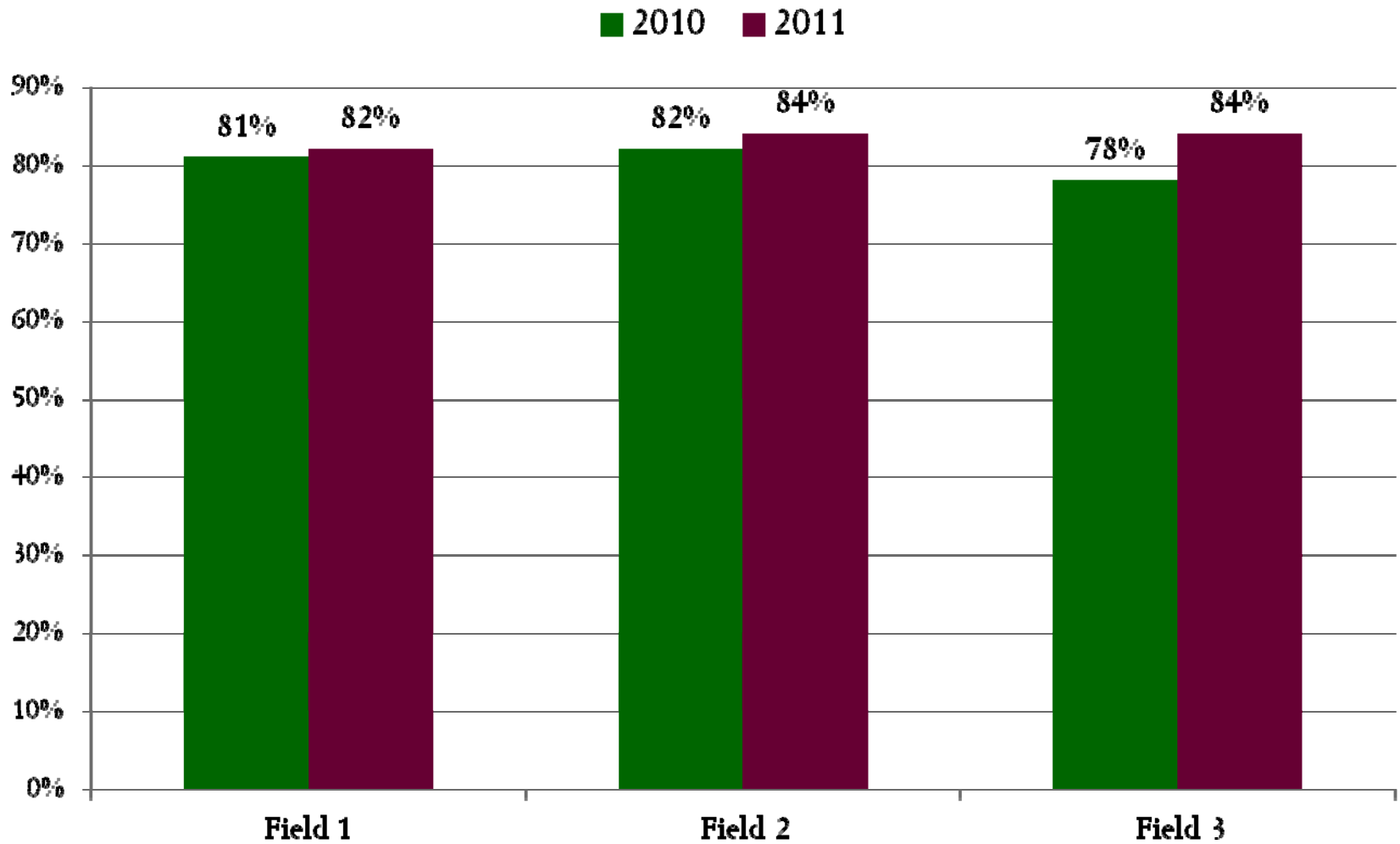
Started Probation - Field Offices



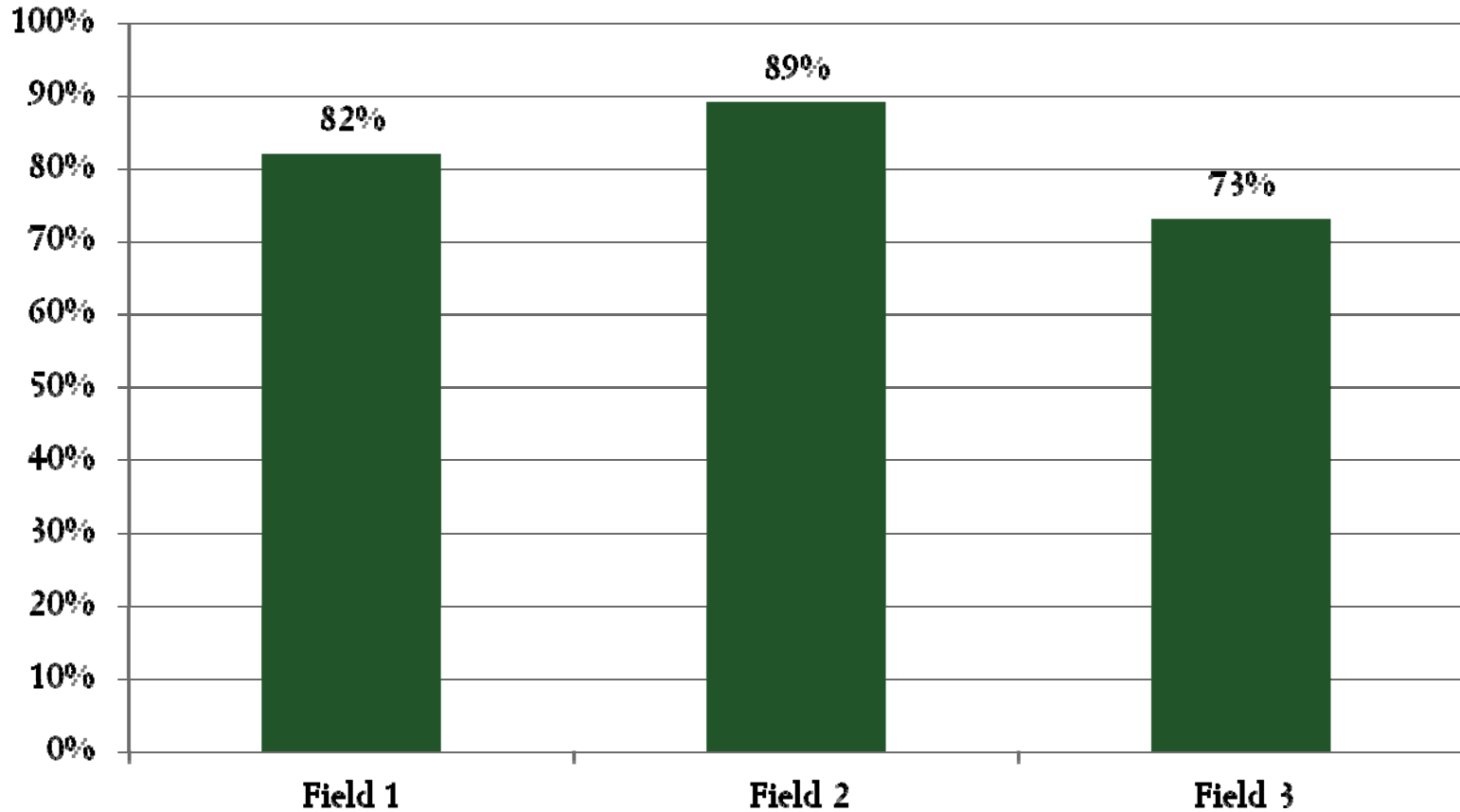
Agent Caseload by Unit



LSI Scoring Accuracy by Adult Field Units



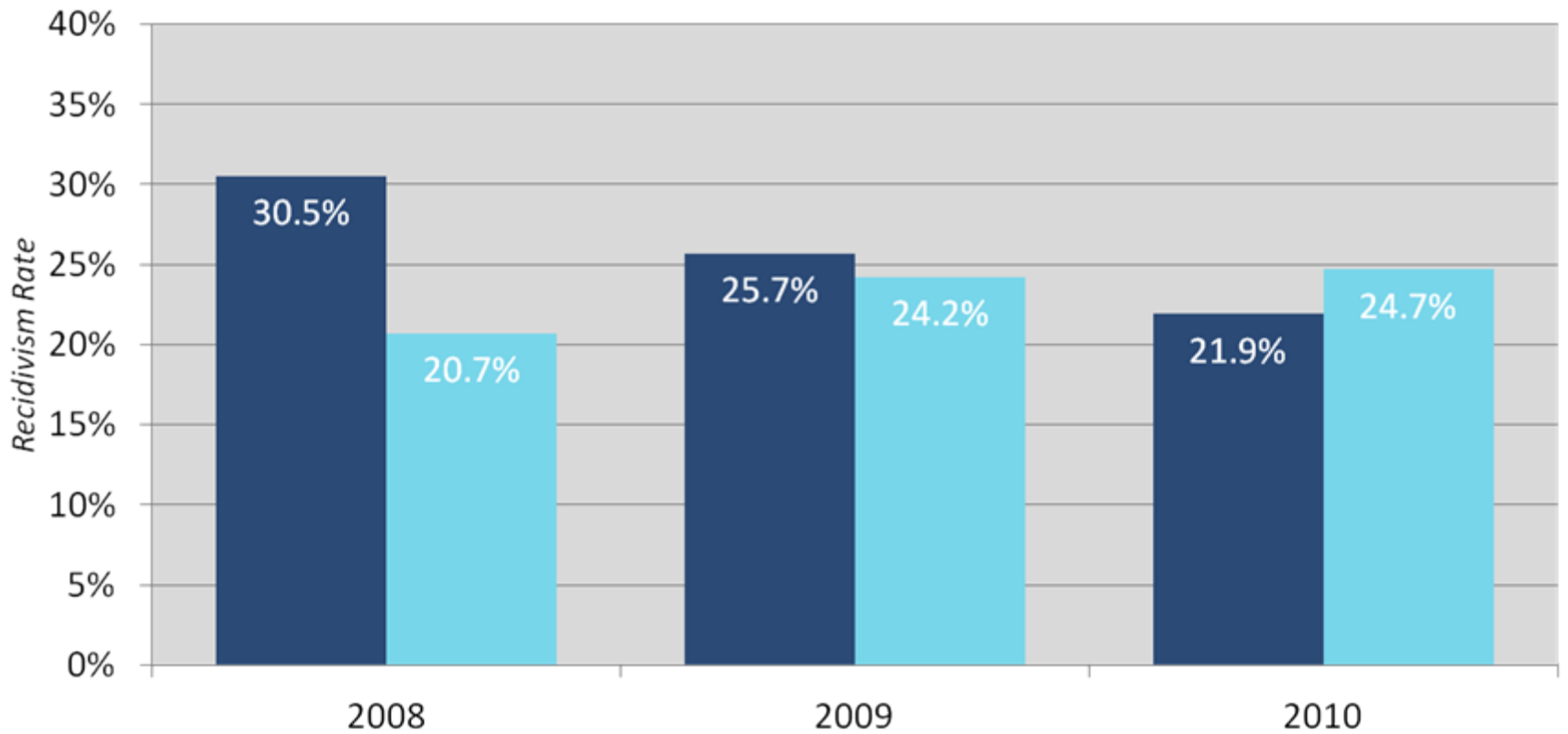
MI Proficiency by Adult Field Units



Ramsey County Community Corrections – Adult Services Division 12- Month Recidivism Comparison by Originating Offense Level

Started Probation – Field Units 1, 2 and 3

■ Felony ■ GM/Misdemeanor



Open Discussion

Presenters Contact Information

- Laurie Lindahl
 - Email: laurie.lindahl@co.ramsey.mn.us
- Leah Bower
 - Email: leah.bower@co.ramsey.mn.us
- Kimberly Sperber
 - Email: Kimberly.Sperber@talberthouse.org